



Beaufort County Public Works Stormwater Infrastructure Project Summary

Project Summary: Ben Mack Drive

Project #: 2010-004 Completed: Aug-09

Narrative Description of Project:
Project improved 700 L.F. of drainage system. Cleaned out 700 L.F. of outfall ditch. Replaced (1) access pipe and (1) crossline pipe. Jetted (1) crossline pipe. Installed rip rap for erosion control.

Material	Unit	Cost/Unit	Qty	Cost
18" HDPE Pipe	linear feet	\$8.71	40.0	\$348.40
Fill Dirt	ton	\$1.00	15.9	\$15.91
Rip Rap	ton	\$47.62	7.5	\$355.25
Filter Blanket Woven	sy	\$0.63	41.7	\$26.25
Turf Staples	each	\$0.03	40.0	\$1.20
Pin Flags	each	\$0.06	7.0	\$0.42
Water	gallon	\$0.01	800.0	\$8.00
Diesel	gallon	\$2.19	149.0	\$326.31
Gas	gallon	\$2.15	13.0	\$27.95
Labor	hours		230.5	\$7,746.04
Total Cost of Materials, Rental Equip., and Labor				\$8,855.73

Note: Labor cost includes the employee's salary plus fringe benefits.

Equipment Cost

Item	Asset	Cost/Hour	Hrs.	Cost
Komatsu Mini Excavator	23000	\$18.65	11.0	\$205.15
JD 444J Loader	23271	\$29.75	1.0	\$29.75
JCB Backhoe	22810	\$36.50	6.0	\$219.00
Vacuum Truck	22812	\$20.30	2.5	\$50.75
Dump Truck	23105	\$16.68	46.0	\$767.28
Pickup Trucks		\$4.17	53.5	\$223.10
Total Equipment Cost				\$1,495.03

Cost/hour excludes fuel cost.

Total Cost: \$10,350.75

Site Photographs

Before

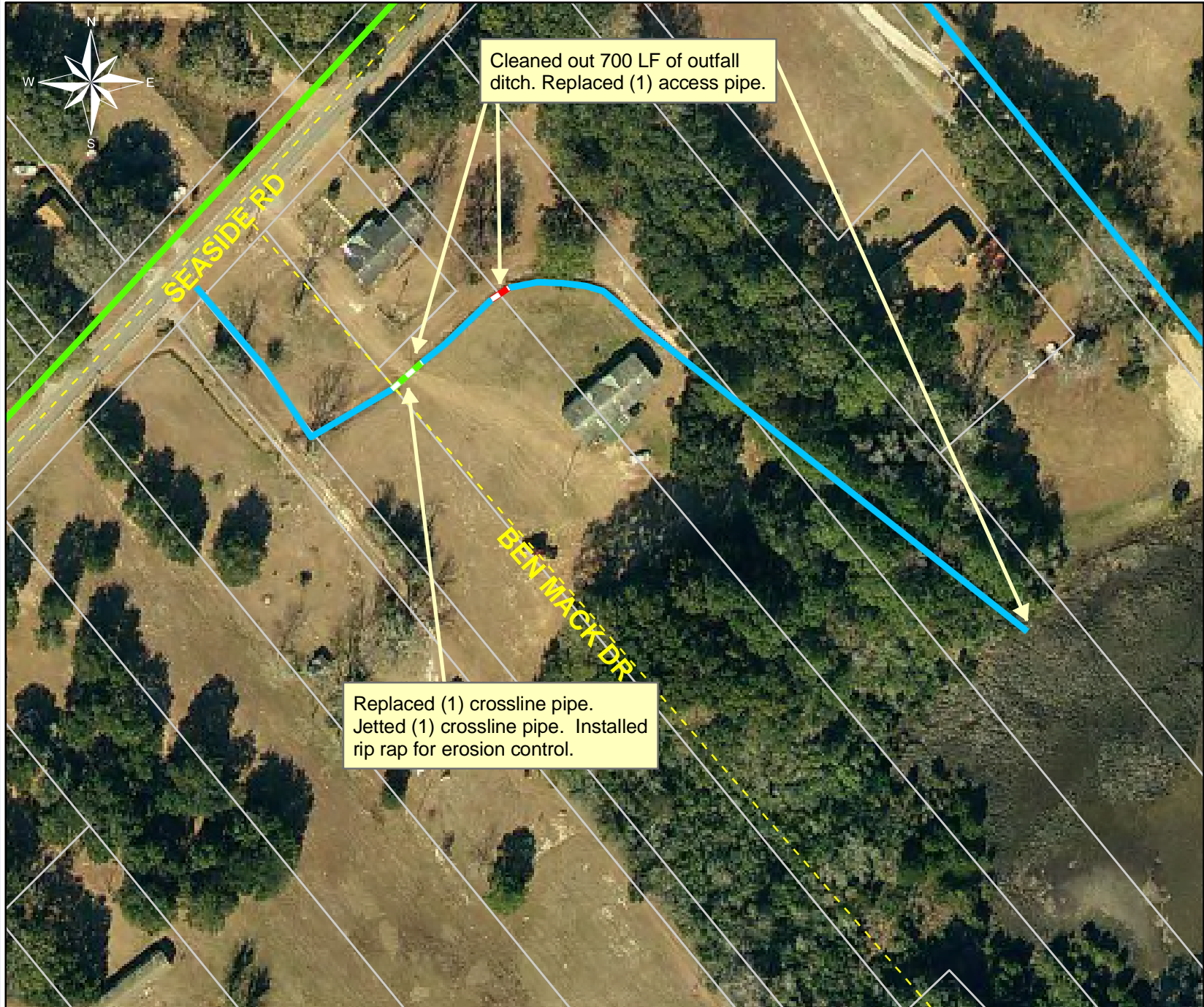


During



After





Project: Ben Mack Drive

Activity: Drainage Maintenance

Project #: 2010-004

Township: St. Helena Island

Completed: August 2009

Legend	
Drainage Type	
	River
	Stream
	Outfall
	Lateral
	Roadside
	Roadside Pipe
	Crossline
	D/W
	Access
	Piped
	Bleeder



1 inch equals 114.53 feet